

GOOD HEALTH STARTS WITH GOOD NUTRITION!

HEALTHY OVER HUNGRY®
Cereal Drive



America's Hunger Problem



1 in 8 people
in the U.S. struggles
with food insecurity.

THE PERSON IN **BLUE** IS MORE LIKELY TO:

→ Purchase unhealthy — but cheaper — food to feed his or her family

→ Choose food over paying bills or getting needed medical care

→ Eat expired food or water food down to make it last longer

Source: **FEEDING AMERICA**

“At Tenet, our mission is to help people live happier, healthier lives. That’s why we’re proud to spearhead this national initiative to fight hunger in America and promote the importance of eating a healthy breakfast.”

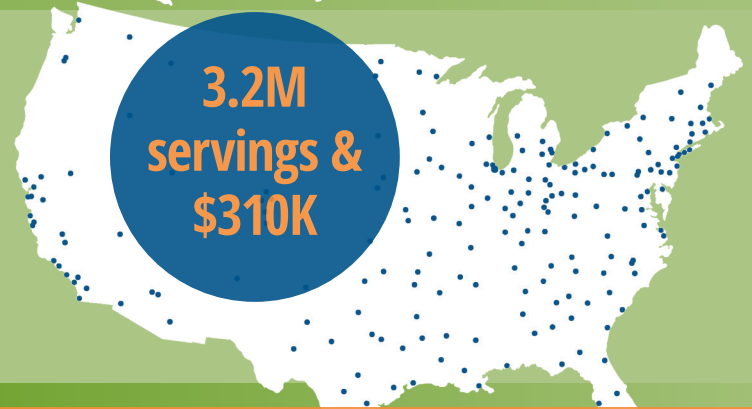


– Sally Hurt-Deitch, Tenet’s Chief Nursing Officer

The Drive’s History



In 2010, the drive was started by a nurse at Tenet’s Children’s Hospital of Michigan.



The Healthy Over Hungry® Cereal Drive now supports more than 100 of Feeding America’s food banks and distribution partners.

[Click here for participating locations](#)

A Healthy Breakfast



Whole grain cereal is part of a well-balanced breakfast, but **dairy**, **fruits**, **vegetables** and **protein** complete the picture.

How Can You Help?

Donate Now!

Go to www.FeedingAmerica.org/Tenet to help Tenet fight hunger!

Thank you for your support!

HEALTHY OVER HUNGRY® Cereal Drive

THANK YOU!

Outstanding Volunteer of the Year

"Pam Prize"



BRIAN R. HALLEY Director of Materials Management

USPI-Baylor Scott & White Surgical Hospital at Sherman (Sherman, TX)

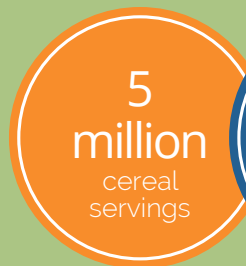
2018 Honorable Mention

Pat Swaller, RN, Director of Patient Experience and Process/Projects, JFK Memorial Hospital (Indio, CA)

Jana Mitchell, Emergency Preparedness Coordinator/Manager, Emanuel Medical Center (Turlock, CA)

Emily Phipps, HR Director, USPI-Oklahoma Center for Orthopedic and Multi-Specialty Surgeries (Oklahoma City, OK)

National Drive COLLECTED



*Includes the matching Challenge Grant



Healthy Over Hungry® Cereal Drive Champion

Most cereal and money collected

Detroit Medical Center / Children's Hospital of Michigan (Detroit, MI)



Healthy Over Hungry® Cereal Drive Heroes

Most cereal and money collected per employee

Extra Large Location (1,000+ employees)

1. Detroit Medical Center / Children's Hospital of Michigan (Detroit, MI)
2. The Hospitals of Providence (El Paso, TX)
3. Carondelet Health Network (Tucson, AZ)
4. St. Francis Hospitals (Bartlett and Memphis, TN)

Large Location (500-1,000 employees)

1. Tenet Corporate Headquarters (Dallas, TX)
2. Lakewood Regional Medical Center (Lakewood, CA)
3. Coral Gables Hospital (Coral Gables, FL)
4. USPI - Corporate Headquarters (Addison, TX)

Medium Location (100-500 employees)

1. Conifer Health Solutions - Chattanooga (Chattanooga, TN)
2. USPI - Baylor Scott & White Surgical Hospital of Sherman (Sherman, TX)
3. USPI - Baylor Orthopedic and Spine Hospital at Arlington (Arlington, TX)
4. USPI - OASIS Hospital (Phoenix, AZ)

Small Location (under 100 employees)

1. USPI - Chandler Endoscopy Center (Chandler, AZ)
2. Tenet Nashville Corporate Office (Nashville, TN)
3. USPI - Northwest Ambulatory Surgery Center (Portland, OR)
4. USPI - Physicians Surgery Center of Tempe (Tempe, AZ)